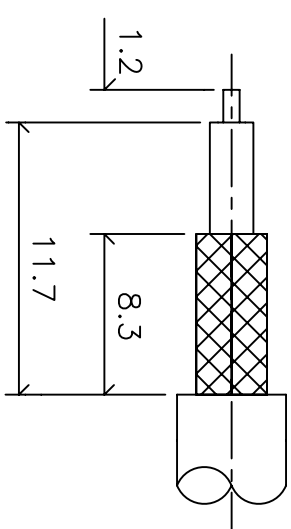
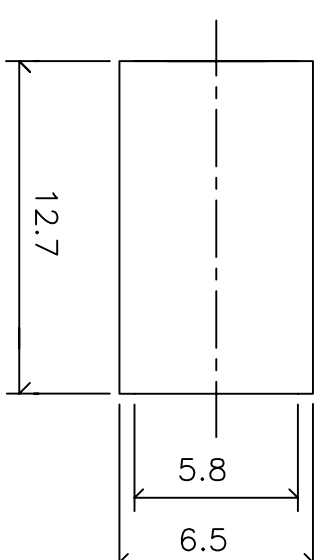
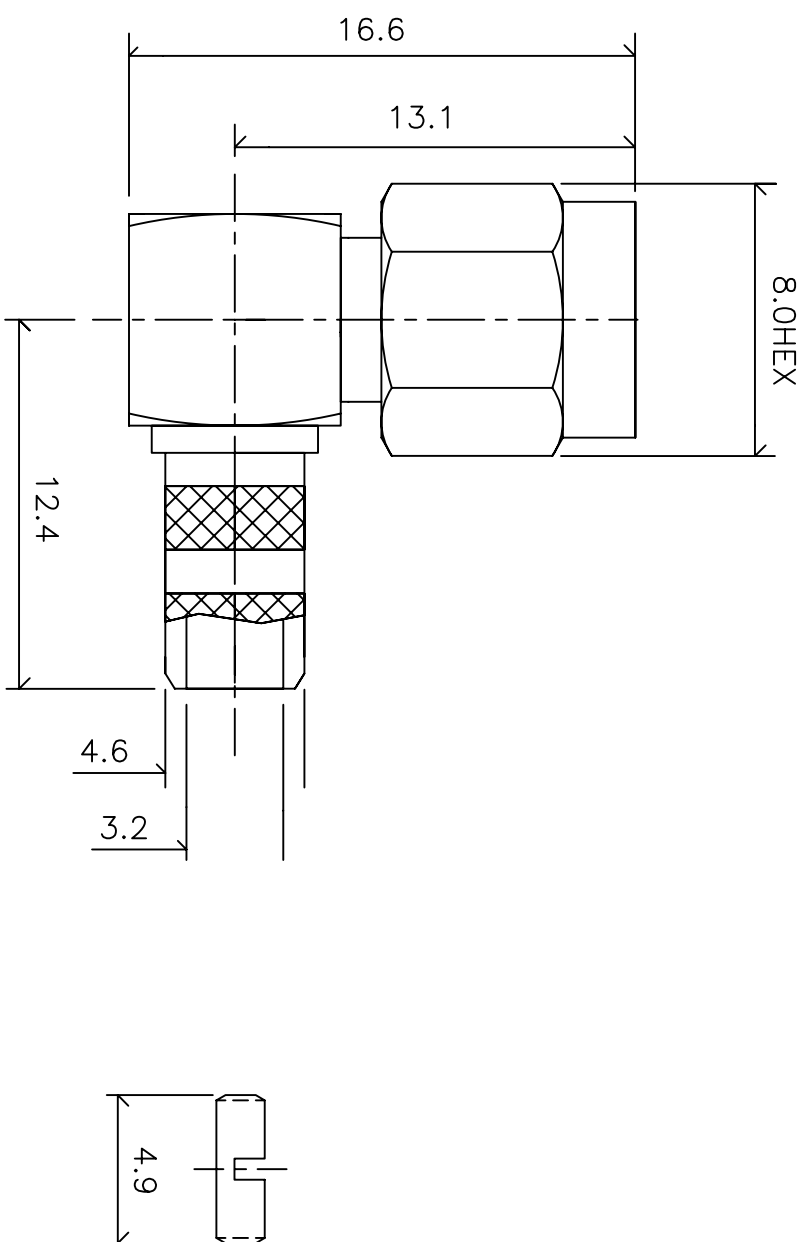


SMA455-142 T124174000TU

品名: SMA ライトアングルプラグ RG142 ケーブル (φ5.0mm) 二重偏祖用



Electrical

Impedance: 50 Ω
 Frequency: DC-12.4GHz
 V.S.W.R: 1.19Max at 2.0GHz
 Insulation Resiatance: 5000MΩ Minimum
 Contact Resistance:
 Center Coantact: 4m Ω
 Outer Contact: 3m Ω
 Insulator Withstanding Voltage: 750VRMS

Mechanical

- ① Body: Brass Gold Finish 5 μ Inch
 - ② Center contact: Brass Gold Finish 30 μ Inch
 - ③ Insulater: Teflon
 - ④ Fellule: Brass Gold finish 5 μ Inch
- Brass Material: Cd < 75ppm, Pb < 40,000ppm
 RoHs Regulation: Comply
 Dulability: 500cycles

F

Δ	- -		
Δ	- -		
Δ	- -		
Δ	- -		
Δ	- -		

未記入公差

長度公差: ± 0.08
 直径公差: ± 0.03

尺度

mm

TAKITEK

タキテック株式会社

製品名

SMA RightAngle Plug for
 RG142 (φ5.0mm dual)

部品名

T124 174 000

G

F

1

2

3

4

5

6

7

8

A

B

C

D

E