



Total Solution Provider in Saw Device

SF-043307-S39

ISM-Band, RF SAW Filter
Revision 0: March 2017



- Electrical Characteristics
 - Package Dimensions
 - Testing Environment
 - Frequency Characteristics
-

SAWNICS Inc.

112 Seonggeo-Street, Seonggeo-eup, Seobuk-gu, Cheonan-si, Chungcheongnam-do, South Korea
/ 31044Tel : +82-41-550-9372 / Fax : +82-41-622-9116 / www.sawnics.com

□ Electrical Characteristics

Maximum Ratings

Parameters Description	Unit	Minimum	Typical	Maximum
Operating Temperature Range	°C	-40	-	+85
Storage Temperature Range	°C	-40	-	+85
Maximum DC Voltage	V	-	-	12
Maximum Input Power	dBm	-	-	10
Source Impedance (unbalanced) ⁽¹⁾	Ω	-	50	-
Load Impedance (unbalanced) ⁽¹⁾	Ω	-	50	-
Package type & size	S39			
Length x Width	-	-	3.8 x 3.8	-
Height	mm	-	-	1.7

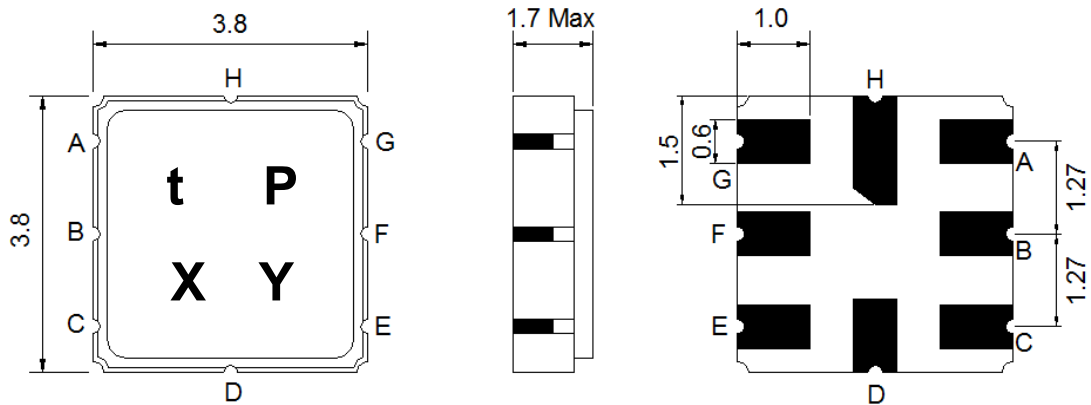
Electrical Specification

Parameters Description	Unit	Minimum	Typical	Maximum
Center Frequency F_c	MHz	-	433.92	-
Minimum I.L. IL_{min}	dB	-	2.2	3.0
Pass band (relative to IL _{min}) 433.42~434.42 MHz	dB	-	-	3.0
Pass bandwidth (relative to IL _{min}) BW3	KHz	1000	1250	-
Attenuation:(relative to IL_{min})				
10.0 ~ 414.0 MHz	dB	40	50	-
414.0 ~ 428.0 MHz	dB	30	40	-
428.0 ~ 432.42 MHz	dB	15	20	-
435.42 ~ 442.0 MHz	dB	10	15	-
442.0 ~ 550.0 MHz	dB	25	30	-
550.0 ~ 1000.0 MHz	dB	45	50	-

Notes : (1)With Matching Network (Ref. Testing Environment Circuit as shown below).

The standard definitions is in JIS C 6703

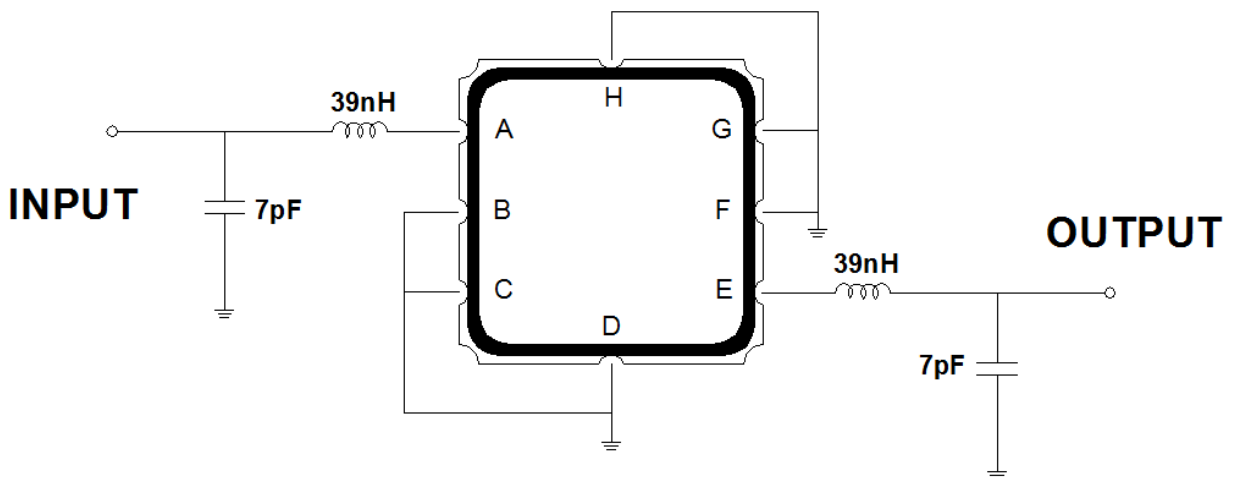
Package Dimensions



Marking Descriptions	
t	ISM-Band Application
P	Series Number
X	Date Code(Year)
Y	Date Code(Month)

Pin Description	
B,C,F,G	Ground
D,H	Case Ground
A	Input or Output
E	Output or Input

Testing Environment



Source & Load Impedance: 50 Ω



□ Frequency Characteristics

Frequency Response

