



Rotating Joints

RJS14001 - WR15 (WR112) I type Rotating Joint



Sylatech is proud to present this WG15 (WR112) rotating joint for marine applications. Designed for long life with dust seals and internal pressure seals, this design operates at a wide temperature band and pressure band. The design also boasts very good rotating stability at 1.05:1 max (1.02:1 typical) and also very good peak power handling.

T: 01751 432 355 E: info@sylatech.com

SPECIFICATION

Frequency	5.85 GHz to 6.725 GHz
Return Loss	17.7 dB Min (VSWR 1:3:1 Max)
Insertion Loss	0.1 dB Max
WOW	0.05:1 Max
Average Power	6.6 kW
Material	Aluminium
Leakage Rate	10 cm ³ min ⁻¹ max
Operating Pressure	30 psig (2 bar)
Finish	Chromate Conversion per MIL-C-5541 Class 1A



RJS15003 - WR15 (WR112) I type Rotating Joint



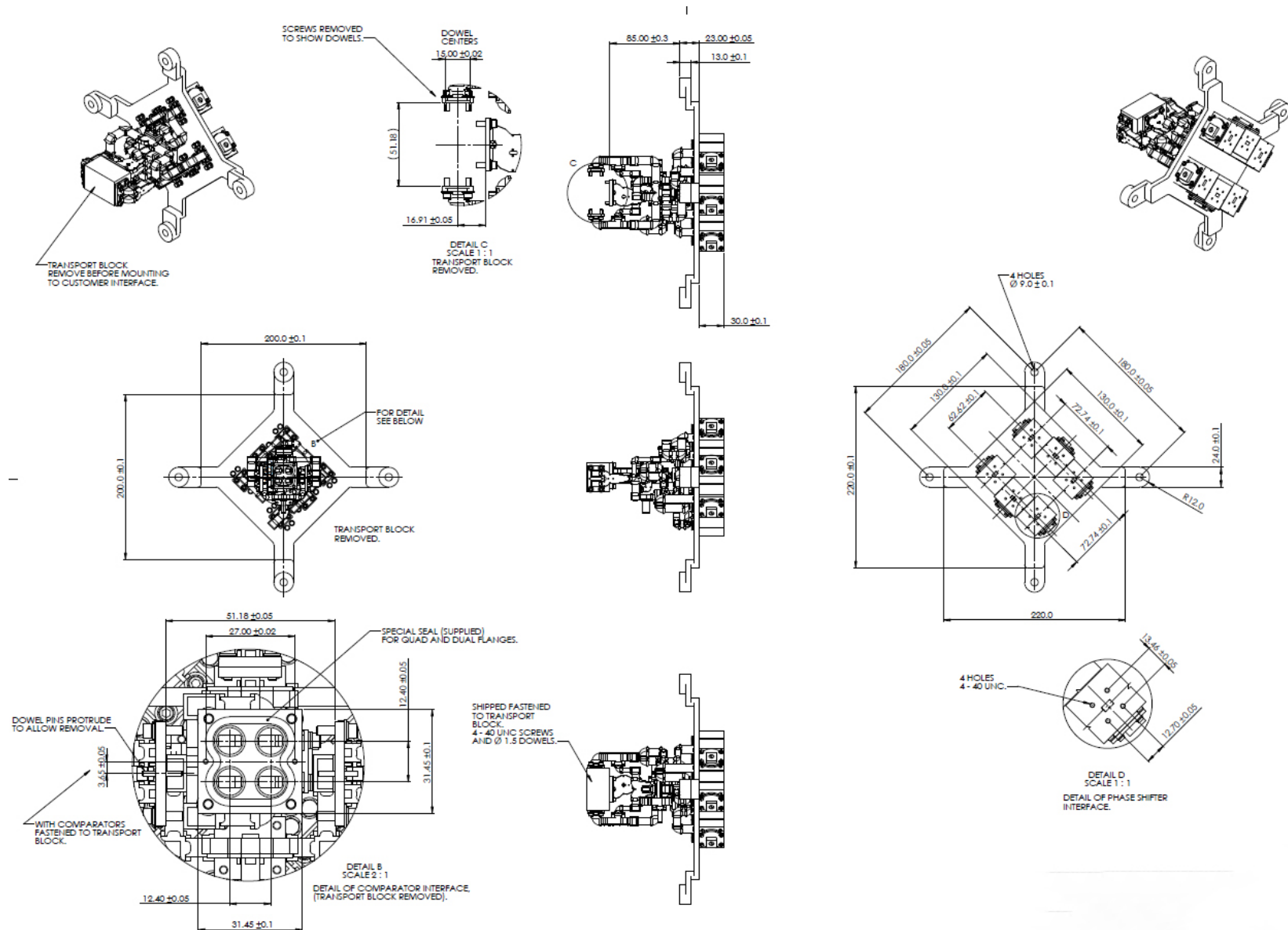
Sylatech is proud to present this WG15 (WR112) rotating joint for marine applications. Designed for long life with dust seals and internal pressure seals, this design operates at a wide temperature band and pressure band. The design also boasts very good rotating stability at 1.05:1 max (1.02:1 typical) and also very good peak power handling.

T: 01751 432 355 E: info@sylatech.com

SPECIFICATION

Frequency	9.9 GHz to 10.5 GHz
VSWR	1.2 : 1 Max
WOW	1.05 : 1 Max
Insertion Loss	0.15 dB Max
Peak Power	200kW Max (at guage pressure 120kPa)
Average Power	3kW Max
Pressure	30 PSI (200 kPa)
Leak Rate	18 PSI (120kPa) 4cm ³ Max
Finish	Chromate Conversion MIL C 5541 Class 1A
Paint	Matt Black DEF STAN 80-161





Engineering your future



Kirkdale Road,
Kirkbymoorside, YO62 6PX
E: info@sylatech.com
T: +44 (0) 1751 432 355
www.sylatech.com